

Teaching with Primary Sources Across Tennessee

LESSON ACTIVITY: AGRICULTURE AROUND THE WORLD

This lesson activity explores different methods of farming from around the world through historic photographs. It consists of 8 pages:

- teacher information sheet (this page)
- lesson activity worksheet (1 page)
- 5 primary source images (5 pages, 1 primary source per page)
- bibliography of images (1 page)

GRADE LEVEL & SUBJECTS

7th grade social studies (culture, economics, geography), and physical science

INSTRUCTIONS FOR TEACHERS

This activity was designed so that you can simply print out and photocopy the activity and primary sources for your students. They can work on these in groups or individually as homework. You can give each group all five sources, or a different source per group. Have students elect a scribe (to record the group's answers to the discussion questions on the activity worksheet) and a spokesperson (to share findings with the class as a whole). Once all five groups have presented their answers, discuss them with the entire class. How do their answers change from country to country? How is farming different today?

EXTENSION IDEAS

- Mark on a wall map of the world all the places that are represented in the primary source images.
- Compare these photographs to photographs of Tennessee farming depicted in the November 2010 Teaching with Primary Sources Across Tennessee newsletter. (Go to <http://www.mtsu.edu/tps>, click on "Newsletters," then click on "November 2010.")
- Tie into physical science lesson by examining how animals and machines make ploughs more effective. Which photograph demonstrates the most effective farming?



TN CURRICULUM STANDARDS

Social Studies:

- 6.1.spi.5. Identify differences between various cultural groups.
- 6.2.spi.3. Identify disadvantages and advantages of nomadic and early farming lifestyles.
- 6.3.spi.2. Identify basic geographic forms.
- 6.3.spi.3. Identify the location of early civilizations on a map.

Science:

- spi.0607.10.2. Interpret the relationship between potential and kinetic energy.

Name(s): _____

Class: _____

Date: _____

Directions:

Answer the following questions associated with the primary source(s) attached.

Support your answers.

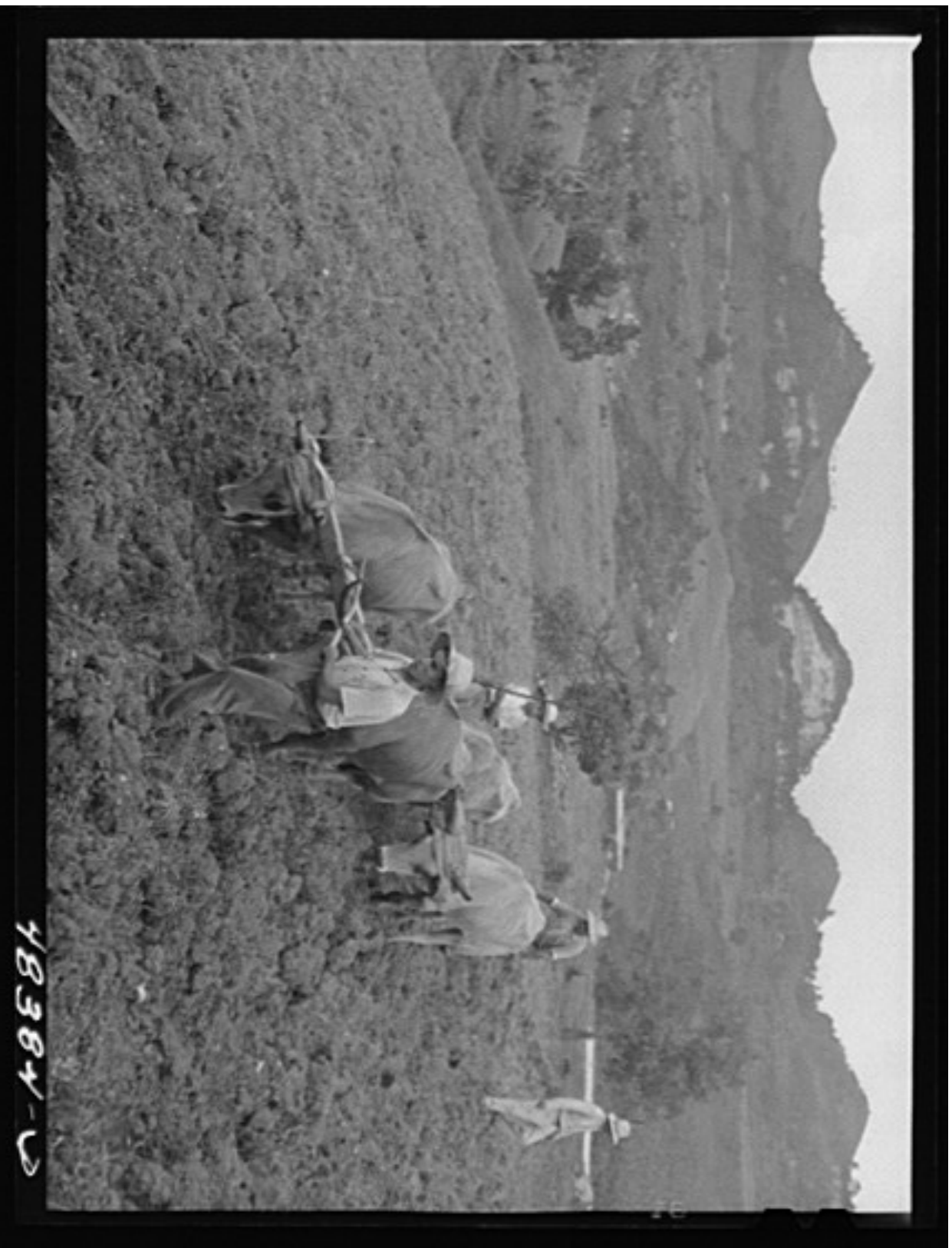
1. What do you observe?
2. What role do animals and machinery play in agriculture? How are they used by people?
3. What type of terrain is used for agriculture, and why?
4. Why would someone take a photograph like this? What was its purpose?



912.A.

"Part II. 1935. Cappadocia trip. October 10 - November 26. Safe Pasha Shiftlik.
Buffalo gas, November 21" [Turkey]

<http://www.loc.gov/pictures/item/2007675295>



Corozal (vicinity), Puerto Rico. Ploughing

<http://www.loc.gov/pictures/item/lsa2000029970/pp/>



"Palestine, Jewish farmer with modern machinery" [Israel]

<http://www.loc.gov/pictures/item/2003652908/>

STANDARD SCENIC COMPANY
MEADVILLE PA



772—A Ploughing Scene near Manila, Philippines.
Copyright 1906 by W. S. Smith.

STANDARD SCENIC COMPANY
MEADVILLE, PA

"A ploughing scene near Manila, Philippines"
<http://www.loc.gov/pictures/item/2002714916/>



“Beersheba and surroundings. (Beer Saba). Beersheba. Beduin women ploughing, with a carnel” [Israel]
<http://www.loc.gov/pictures/item/mpc2010001026/PP/>

BIBLIOGRAPHY OF IMAGES



Delano, Jack, photographer. "Corozal (vicinity), Puerto Rico. Ploughing." Negative. Washington, D.C.: Farm Security Administration/Office of War Information, 1942. From Library of Congress: *Farm Security Administration/Office of War Information Black-and-White Negatives*. <http://www.loc.gov/pictures/item/00650270/>



Matson, G. Eric, photographer. "Beersheba and surroundings. (Beer Saba). Beersheba. Bedouin women ploughing, with a camel." Negative. Jerusalem: American Colony Photo Department, between 1920 and 1933. From Library of Congress: *G. Eric and Edith Matson Photograph Collection*. <http://www.loc.gov/pictures/item/mpc2010001026/PP/>



"Palestine, Jewish farmer with modern machinery." Photograph. New York City: Underwood & Underwood, between 1900 and 1922. From Library of Congress: *Carpenter Collection*. <http://www.loc.gov/pictures/item/2003652908/>



"A ploughing scene near Manila, Philippines." Stereograph. W.S. Smith (Standard Scenic Co.), c. 1906. From Library of Congress: *Stereograph Cards*. <http://www.loc.gov/pictures/item/2002714916/>



Whiting, John D., photographer. "Part II. 1935. Cappadocia trip. October 10 - November 26. Safe Pasha Shiftlik. Buffalo gas, November 21" from "Diary in photos, vol. I, 1934-1935 [no. 912A]." Photograph in album. 1935. From Library of Congress: *Visual materials from the Papers of John D. Whiting (John D. Whiting Collection)*. <http://www.loc.gov/pictures/item/2007675295>.